



the Johnson **87**

...distinctly Johnson



Standing out from the crowd

Johnson Yachts, established almost 20 years ago to build high quality, luxury motor yachts, is well known for its progressive and distinctive designs; the work of one of the world's leading naval architects, Bill Dixon of Dixon Yacht Design.

Very much a design led company; the combination of Dixon Yacht Design's styling and naval architecture, plus very high quality workmanship from Johnson has made the company the success it is today.

One of the first companies in the Far East to employ a European designer, this successful partnership between European design and Far East build quality has led to Johnson's vessels finding ready acceptance in markets the world over.

As they move into their third decade with a new range of yachts, of which the 87 is the first; her 'superyacht styling', together with the many benefits that brings, will maintain the Johnson marque at the leading edge of modern yacht design and construction.



first impressions last

87 – First of the fleet

The 87 is the first in a new range of yachts from Johnson spanning 75 to 103 feet. As with her sister vessels in the new range, the 87's superyacht styling gives this yacht real presence and individual character on the water. Adding this to her wider than normal beam, leads to a significant increase in volume over similar length yachts, giving benefits in both internal volume and deck space.

Johnson has always been a company which believes that the quality of their product and customer service go hand in hand. First impressions when first boarding an 87, of high quality and attention to detail, will remain your impression after closer inspection. The semi-custom interiors are hand crafted and fully equipped with high quality equipment.

This combination of ground breaking design, high quality equipment, excellent workmanship and a real commitment to customer service make any Johnson a very attractive proposition and not surprisingly, many owners are on their second or third vessel from the company!

87





open to your viewpoint

Your choice – sky lounge or flybridge

There are two versions of the 87. For those who like the great outdoors, the flybridge version, and those who want protection from the elements and an extra saloon, the sky lounge option.

Whichever you choose the 87 comes with many common features. Careful design of her wide beam hull gives a dry, stable ride, with a sea kindly motion made even better by the standard digital stabilisers. Ease of handling is assured with hydraulic thrusters both bow and stern. Safety and comfort are enhanced by the wide, teak laid side decks, the substantial stainless steel stanchions and guardrails, and deck fittings and rope handling equipment which are all high quality, and carefully positioned.

The tender lives in its own drive-in, remote opening, tender garage and the yacht is also equipped with an electric davit capable of lifting 600kg.

This brochure can only give you an outline of the 87, the real answer is to call us or one of our dealers and spend time on board.

effortless power





Home from home

The interior of the 87 is an oasis of comfort and calm. Van Capellen insulation ensures the calm, while the comfort comes from the knowledge that owners are free to customise the interior to exactly match their requirements. For example, one of the most popular options is a 'country kitchen' in place of the on-deck master suite.

Another benefit of the superyacht styling and wide beam is the volume of interior space available. Both day areas and cabins are very generously proportioned as are the operational areas of the yacht. Crew quarters are provided in two twin cabins.

Every cabin has air conditioning and is equipped with an entertainment centre, varying from a 15" LCD TV with DVD player and tuner amplifiers, in each guest cabin, to a massive 42" plasma screen TV with DVD player and tuner amp in both the saloon and owners master cabin.

As with the exterior of the yacht, the emphasis is on quality equipment and the highest standard of workmanship in every department.

exceptional
quality



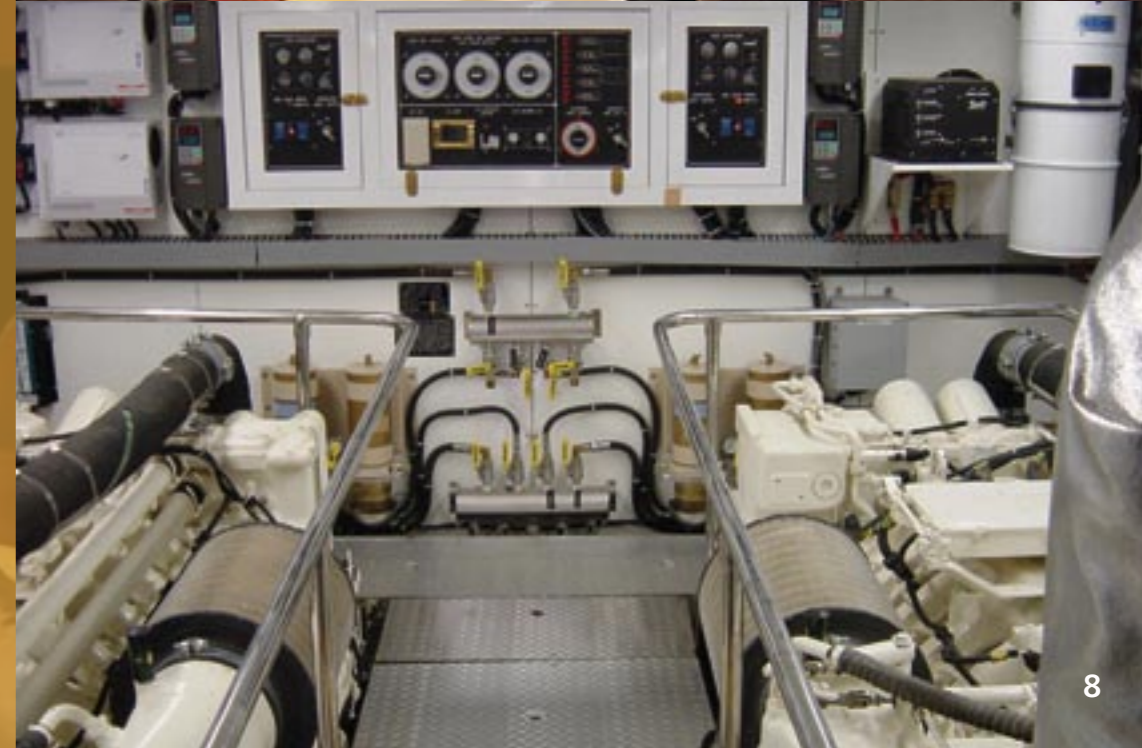
Space, comfort & relaxation



6



7



8



9

Johnson 87		
Principal dimensions - technical information and equipment		
Length overall	26.54m	87' 1"
Beam	7.19m	23' 6"
Draft (half load – flybridge version)	2.00m	6' 7"
Displacement (light ship – flybridge version)	82,000kg	80.7 t
Fuel capacity	12,490lts	3,300 gallons
Water capacity	2,040lts	540 gallons
Standard engines	CAT C-30 1550HP. Other engine options available to 1825HP	
Generators	2 x 33KW @ 60HZ (USA) or 2 x 26KW @ 50HZ (EURO)	
Cruising speed	18KTS	
Designers	Dixon Yacht Design	

HULL AND DECK FITTINGS AND EQUIPMENT

Main deck – teak except foredeck. High bulwark with flush mounted deck lights and bulwark side doors for boarding. Stainless steel integral rollers and chain stopper for anchor chain. Vertical electric anchor winches with dual direction. 2 x mooring capstans on aft deck plus a capstan on swim platform. 2 x 130lb stainless steel anchors. 2 sets of 300 feet of anchor chain. Fresh water anchor chain wash down. Heavy duty stainless steel 2" handrail with 1½" stanchions. Stainless steel flagpole on bow rail. Forward deck storage locker for fenders and lines. Heavy duty 316 stainless steel cleats and fairleads with rollers. Black tempered safety glass (except 5 windows in front of P/H). Stainless steel pneumatic saloon sliding door. Side doors in deck house. Stainless steel port lights. Swim platform with stowaway shower unit and hot and cold water. Folding swim ladder in storage well. Stainless steel handrails on aft deck stairs. Aft deck seating. Aft deck high – low dining table with burr wood inlay. Solid stainless steel rub rail around hull / deck joint. Rub rail with stainless steel cap on lower aft hull sides. Antifouling bottom paint. Boot stripe. Zinc anodes on transom.

FLYBRIDGE

Non-skid FRP. Instrument console with Perspex cover. "U" shaped seating and table. Wet bar area equipped with refrigerator, barbecue and sink. Integrated stainless steel handrails around bar unit. Indirect lighting system under wet bar and seating. Teak stairway from aft deck to flybridge. 24V electric davit with 600 kg lifting capacity. Buell air horn set – 3 horns. Flag staff on rear of flybridge. Helmseat. 2 x bar stools. Hard top.

ENGINE, PROPULSION AND STEERING SYSTEM

2 x Caterpillar C-30 1550 hp diesel engines (other options available). 2 x engine fuel filters with alarms. 2 x generator fuel filters with alarms. 3½" stainless steel shafts. High performance 5 blade propellers. Main and intermediate bronze shaft struts with backing plates. Shaft and rudder packing glands with maintenance free seals. Morse electronic engine control system. Power steering system with PTO's on both engines. Stainless steel 24" steering wheels at both steering positions. Stainless steel emergency tiller. Stainless steel rudders. Heavy duty stainless steel wipers with variable speed controls and screen washer system. Bow and stern thrusters. Trac stabiliser system.

ENGINE ROOM AND EQUIPMENT

Well planned, spacious engine room with diamond aluminium deck plates. Van Cappellen sound proofing. Water tight bulkhead. Full length stainless steel overhead grab rails. AC fluorescent lights and DC dome lights. High performance engine room blower and moisture elimination system. Automatic fire detection and extinguishing system in engine room. Fire detection system throughout vessel. Engine alarm system for low oil pressure and high water temperature. High volume AC fresh water pump and back up DC pump. Fresh water hose in engine room. Cruisair air conditioning units. Aluminium fuel tanks with electric gauges. 1400 gallons per day water maker. Oil change pump system for engines, generators and clutches. Heavy duty engine room door. Manual bilge pump. Fuel transfer pump. Workbench with tools box.

ELECTRICAL SYSTEMS

220 / 110 AC AND 24 volt DC electrical supplies. Shore power inlets for 100amp and 50 amp. Colour coded wiring for easy identification. 2 x Northern lights 26kw diesel generator sets with sound shields, wet exhaust mufflers and gas water separators. Automatic battery chargers 2 x 80 amp, 1 x 30 amp. 3 x vapour proof battery switches. 4 x 225 amp / hour sealed gel batteries for services. 2 x 225 amp / hour sealed gel batteries for engines. 2 x 225 amp / hour sealed gel batteries for gensets. All batteries enclosed in boxes and covered. Main electric panel includes AC and DC circuit breakers. 24 volt DC monitoring and main circuit breaker panel. AC voltage duplex receptacles located throughout, including engine room. GFI protection for AC required outlets. Electrolysis bonding system.

PLUMBING SYSTEM

150 gallon holding tank with macerator pump forward. 50 gallon holding tank with macerator pump aft. "Y" valve for holding tank dock pump out. Holding tank level indicators to both tanks. 3 x sump pumps. Marine grade lines for fresh water system. 2 x water heaters 1500w, 30 gallons with hot water circulating pumps. Stainless steel tanks for 540 gallons of water. 7 x electric bilge pumps. 2hp AC fire pump with on deck fire hose. High water bilge alarm. Dockside fresh water inlet. Colour coded piping system for easy identification. Bilge exhaust ventilation. Bronze intake valves. All through hull fittings are bronze. Manifold overboard discharge system to minimise number of through hull fittings.

INTERIOR EQUIPMENT (in accordance with agreed plan)

High quality leather sofas. Interlocking vinyl ceiling panels throughout. High quality door lock furniture throughout. Italian halogen ceiling lights throughout. Choice of fabrics for bedding and curtains. Indirect lighting fitted throughout under sofas, beds and curtain valances. All stairways have safety light system. King size bed in master stateroom. TV cabinet in each cabin. Hanging locker cabinet in each cabin. CD / radio on flybridge. Stereos and TV's in each cabin – Saloon 42" plasma TV, amplifier / tuner, DVD player – Master cabin, 42" plasma TV, amplifier / tuner, DVD player – Forward V.I.P. cabin, 15" LCD TV, DVD / amplifier / tuner – Starboard / Port midships cabin, 15" LCD TV, DVD / amplifier / tuner – Crew cabin, 15" LCD TV, DVD / amplifier / tuner. Safe in master stateroom. Ice maker in saloon. Built in vacuum cleaning system. Saloon and master cabin power curtain. 2 x saloon bar stools.

GALLEY

Stainless steel sink with tap. Family size refrigerator. Full size electric cook top. Microwave with convection oven. Dishwasher. Trash compactor. Marble galley bench tops. Crew galley – washer, dryer, cook top, dishwasher, microwave with convection oven, icemaker / refrigerator.

technical info

HEADS

Marble counter top and splash backs in all heads. Seamless polyurethane finish in all heads. Towel rail and rings, toothbrush holder in all heads. Fresh water vacuum toilets in all heads. Exhaust fans in each head. Marble flooring. Waste treatment system.

NAVIGATION AND INSTRUMENTATION

Integrated instrument panel at both helm stations. Monitoring system for important safety equipment (bilge pumps, blowers, navigation lights etc.). Steering compass at both helm stations. Full set of international navigation lights. Search light. Depth speed and log information at both helm stations. Rudder indicator at both stations. Engine console with all gauges. 64 mile radar. Video plotter and GPS plus back up GPS. Simrad autopilot. VHF radios at both stations with hailer. CCTV monitoring system covering forward deck, engine room, aft deck and swimming platform.

NB. This general specification does not constitute an offer for sale of any particular yacht and is for guidance use only. The company reserves the right to change the specification at anytime and the specification may vary from one country to another. A detailed specification will, of course, be agreed with our client prior to the signing of contracts.

Image reference of interior photographs

- 1 VIP guest cabin
- 2 Galley
- 3 Owners suite heads
- 4 Saloon dining area
- 5 On deck master cabin
- 6 Sky Lounge
- 7 Raised pilot house helm position
- 8 Engine room
- 9 Country kitchen





Johnson Yachts Company Limited

No 101 Kuang Ho Road, Hsiao Kang District, Kaohsiung 81242, Taiwan, R.O.C.

Tel: 886-7-806-5571~3 / 806-3970~1 **Fax:** 886-7-806-0521 **Email:** sales@johnsonyachts.net

Web: www.johnsonyachts.net

the Johnson 87